



Southwest High School

AQUATIC CENTER

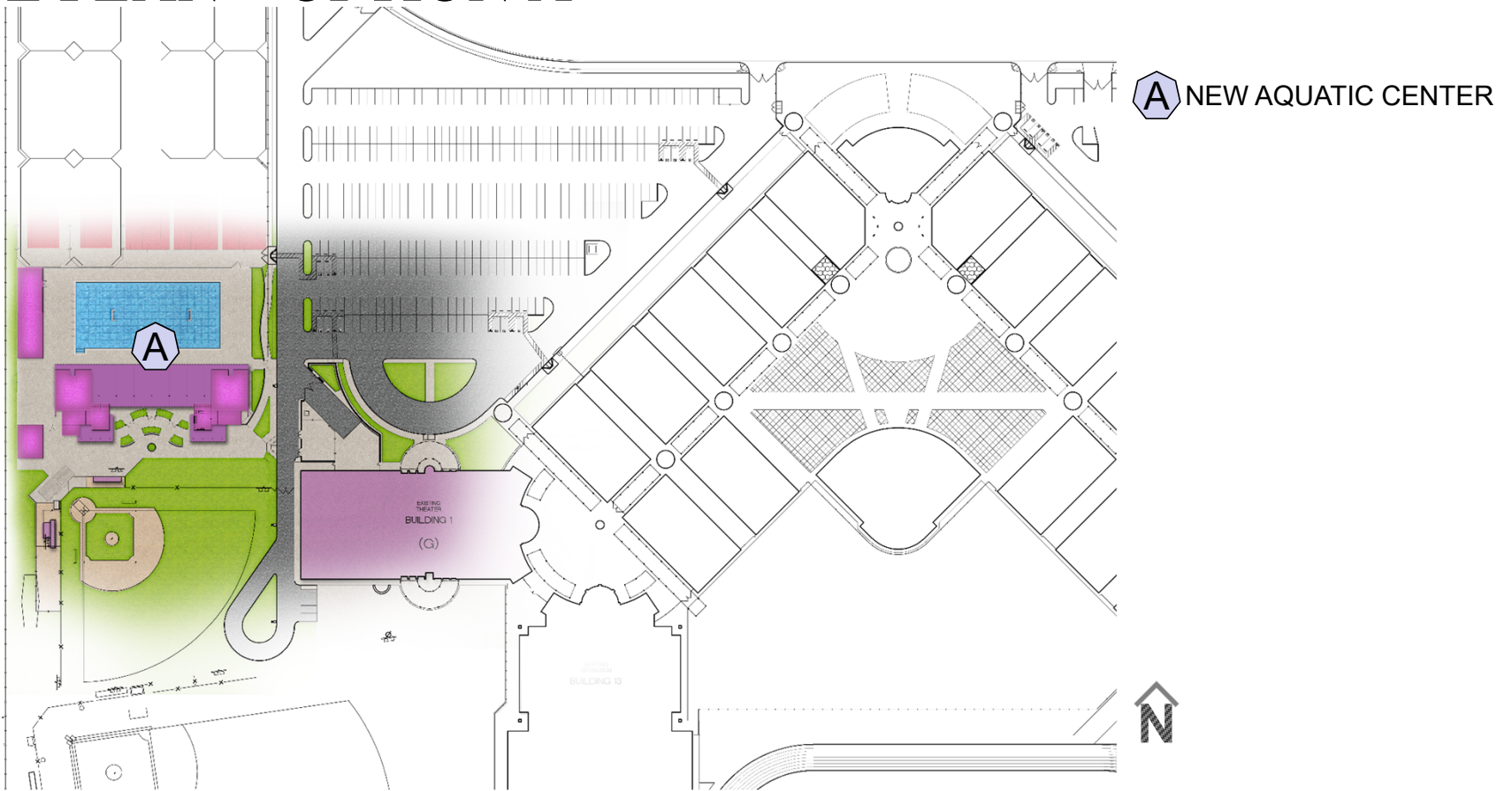
April 14, 2022
Board of Trustees Presentation



Central Union High School District
El Centro, California

Sanders, Inc.
Architecture/Engineering

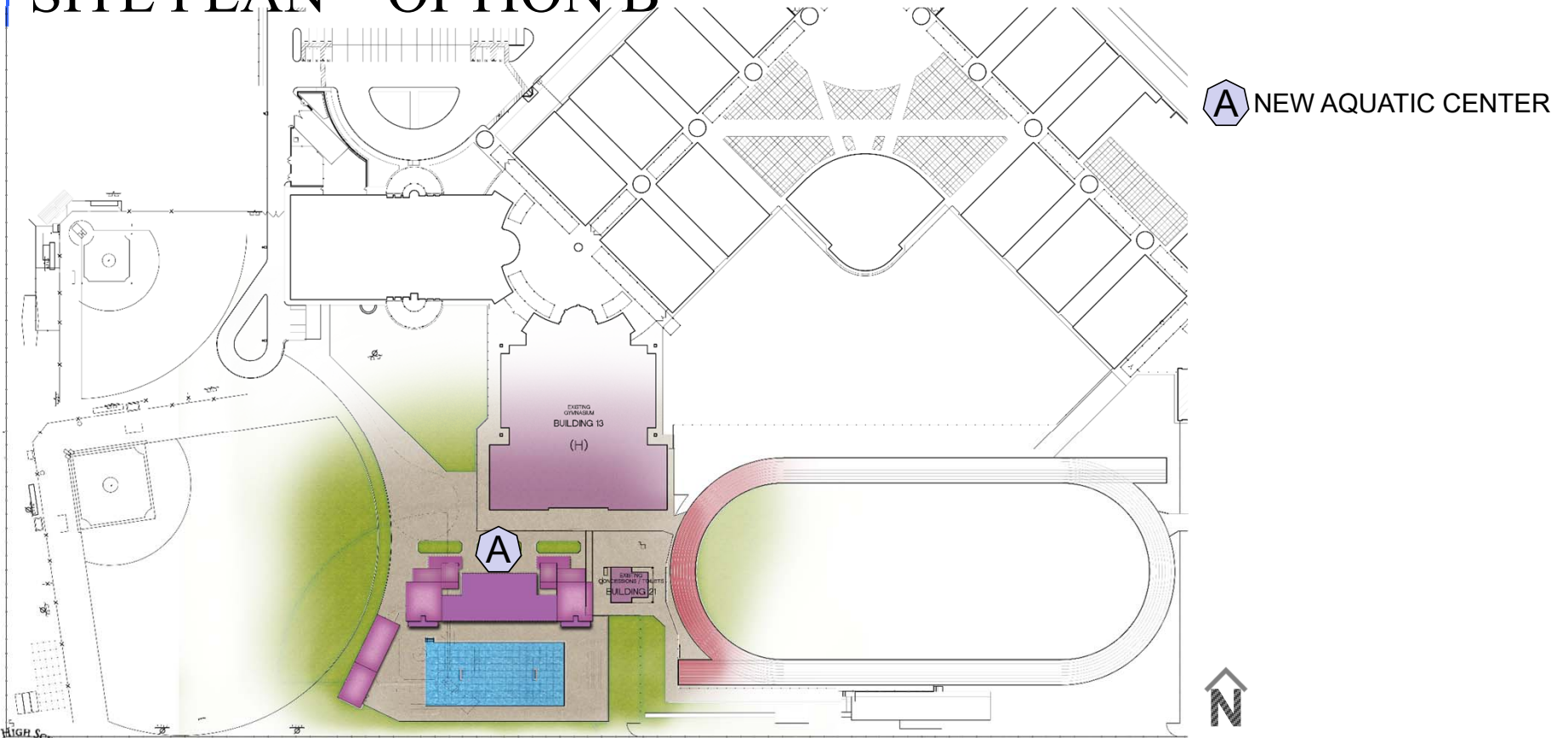
SITE PLAN – OPTION A



Central Union High School District
El Centro, California

Sanders, Inc.
Architecture/Engineering

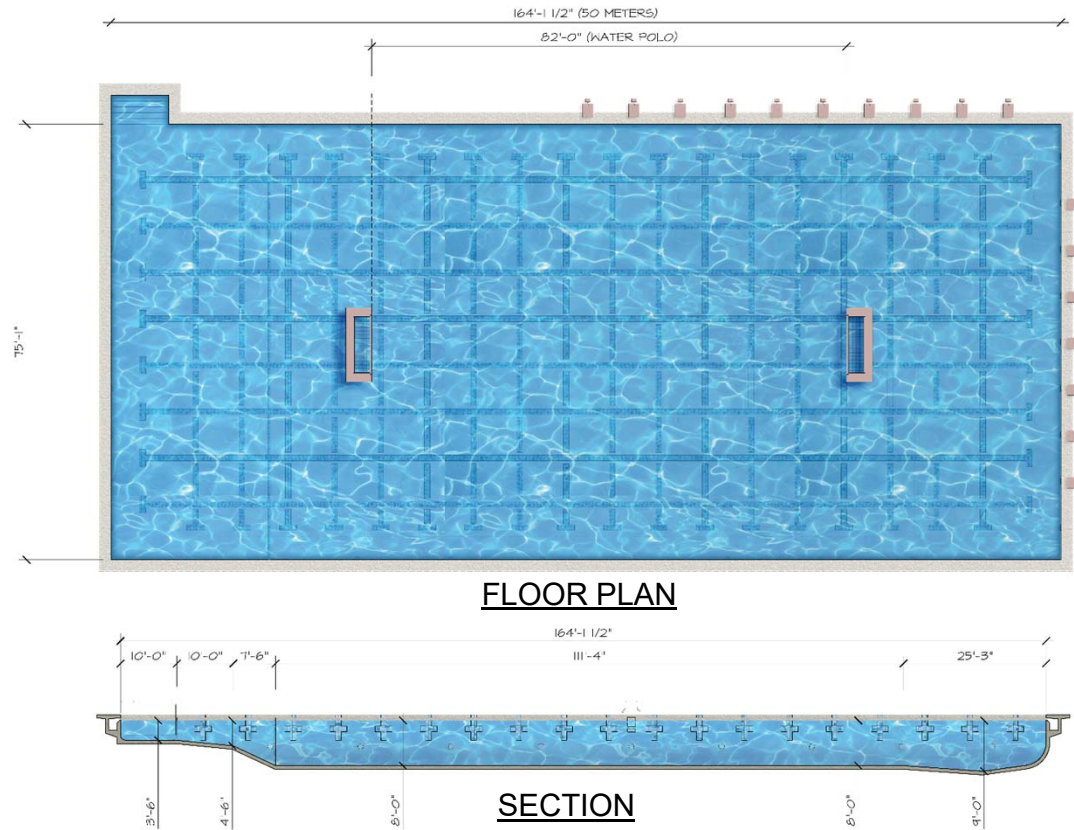
SITE PLAN – OPTION B



Central Union High School District
El Centro, California

Sanders, Inc.
Architecture/Engineering

POOL FLOOR PLAN AND SECTION





BIRDS EYE VIEW





AQUATIC CENTER - WEST VIEW





AQUATIC CENTER - EAST VIEW



MAIN ENTRANCE

AQUATIC CENTER FEATURES

Pool Features

1. Deep and Fast
2. Shallow end to support swim instruction
3. Water Polo Court
4. 25 Yard x 50 Meter
5. Cooling System
6. Solar Power heating system
7. Diving blocks at deep end of 50 meter lanes and on 25 yard lanes
8. Colorado timing system, touch pads and scoreboard



AQUATIC CENTER FEATURES

Supporting Facilities

1. Shaded seating, 250 – 500 persons
2. High Volume Low Velocity Fans at shaded seating (Big Ass Fans)
3. Restrooms
4. Changing / Locker Rooms for PE and Swim Team
5. Concession to support Sport Fields and Aquatic Center
6. Sufficient storage for lane lines, PE sports and Swim Team equipment



AQUATIC CENTER FEATURES

Site Features

1. Public access
2. Fully fenced and gated
3. Update / resurface remaining basketball courts, Add handball court
4. Site lighting for night events





THANK YOU